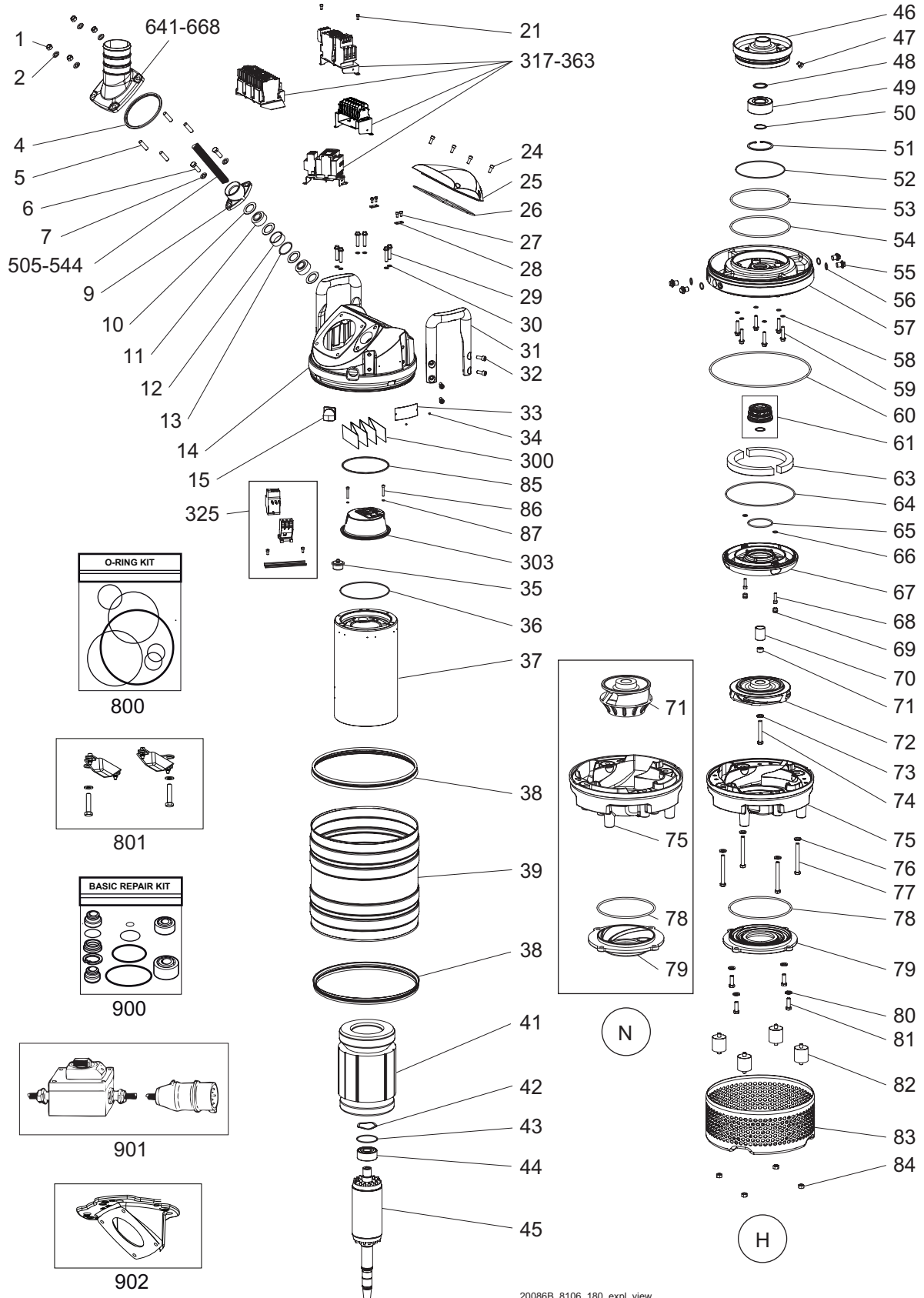


Parts List



www.grindex.com

Matador — 8106.180



Parts List

Matador — 8106.180

Overview

Table of Contents

This publication contains the following topics:

Topic

Introduction	4
Practical Information	5
Data Plate Interpretation.....	6
Order parts.....	7
Spare Parts.....	8

Introduction

Purpose

The purpose of this manual is to give the reader information about available spare parts and accessories for the product.

Recipient

The manual is principally intended for Grindex

- customers
 - service personnel
 - sales personnel
-

Contact

For more information

- contact your Grindex representative
 - visit <http://www.grindex.com/>
-

Reference

More information about the product is available in the following documents:

- Installation, Operation and Maintenance
 - Grindex accessories list
-

Practical Information

Overview

Table of Contents

This chapter contains the following topics:

Topic

Data Plate Interpretation	6
Data Plate	6
Order parts	7

Data Plate Interpretation

Introduction

The Grindex product is always provided with data plates:

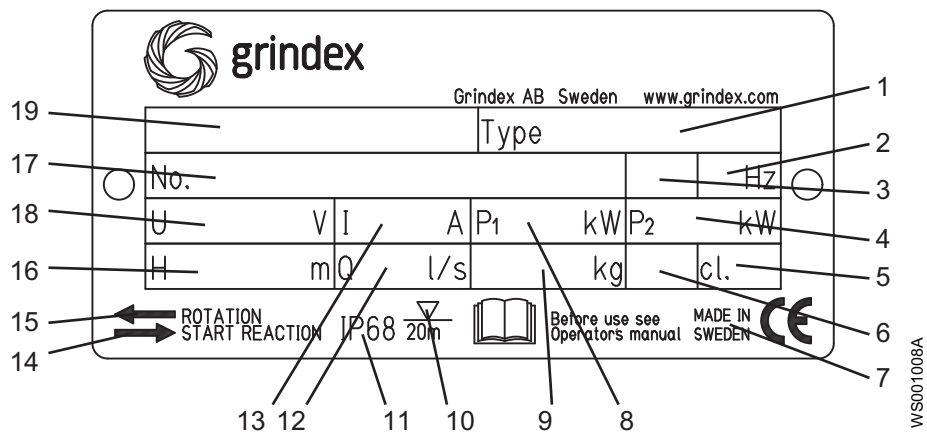
- The general data plate is used on all products.
- The approval plate is added to all explosion proof products.

Data Plate

The product may only be operated within the parameters stated on the data plate.

Illustration

This is an illustration of a general data plate.



Field description

This table shows the fields on the general data plate, and which information each field contains.

Field	Description	Field	Description
1	Pump type number	11	Degree of protection
2	Frequency	12	Maximum capacity
3	Phases, type of current	13	Rated current
4	Rated shaft power	14	Direction of the start reaction
5	Thermal class	15	Direction of the impeller rotation
6	Locked rotor code-letter	16	Maximum head
7	Country of origin	17	Serial number
8	Maximum power consumption	18	Rated voltage
9	Product weight	19	Pump model
10	Maximum submersion depth	-	-

Order parts

Order

When ordering spare parts, state product number and serial number of the product, spare part number and quantity.

Requirements

Genuine Grindex parts must always be used for repairs if the product is to fulfill requirements and obtain official approval.

Specially Approved Products

Spare parts marked with ^(EX) after the part number are subject to dimensional accuracy inspection.

Spare Parts

NOTE!

Parts with position numbers that end with .9xx are NOT included in the unit and must be ordered separately.

Pos. No	Part. No	Denomination	Qty/Version 180
1	410 011	Hexagon nut M12-A4-70	4
2	132 424	Plain washer 12-A2-170	4
4	50 897 00	U-ring	1
5	410 171	Stud M12X35-A2-70	4
6	410 197	Hexagon head screw M12X35-A2-70	2
7	132 424	Plain washer 12-A2-170	2
9	51 033 04	Entrance flange	1
10	132 312	Plain washer (33)-35 MM	4
10	132 334	Plain washer (14)-20 MM	4
10	132 336	Plain washer (20)-32 MM	4
11	410 112	Seal sleeve (14)-17 MM	2
11	410 113	Seal sleeve (17)-20 MM	2
11	410 114	Seal sleeve (20)-23 MM	2
11	410 115	Seal sleeve (23)-26 MM	2
11	410 116	Seal sleeve (26)-29 MM	2
11	410 118	Seal sleeve (32)-35 MM	2
12	51 025 02	Ring	1
13	410 086	O-ring 49.5X3 NBR	1
14	50 865 00	Cover	1
15	50 869 00	Air release valve	1
21	410 026	Hex.socket hd screw M6X12-A4-70	8
24	50 021 33	Hex.socket hd screw M8X20-A4-80	4
25	50 994 00	Cover	1
26	132 422	O-ring 219.3X5.7 NBR	1
27	410 026	Hex.socket hd screw M6X12-A4-70	2
28	50 902 00	Earthing plate	2
29	410 076	Hexagon flange screw M10X45-A4-80	6
30	50 037 34	O-ring 10.3X2.4 NBR	6
31	50 866 00	Handle compl.	2
32	50 022 17	Hex.socket hd screw M10X25-A4-70	8
33	50 888 00	Plate-blank	1
		Use 50 907 00 (EU), 50 907 01 (US) as spare part.	

Pos. No	Part. No	Denomination	Qty/Version 180
34	410 000	Drive screw 4X5-A2-70	4
35	51 024 00	El.lead through unit	1
36	410 022	O-ring 175X3 NBR	1
37	51 031 00	Stator housing	1
38	51 059 00	Seal ring	2
39	50 867 00	Cooling jacket	1
41	51 007 01	Stator 21-18-2b	1
		50Hz: 400V-415V D, 690V Y. 60Hz: 460V D.	
41	51 007 02	Stator 21-18-2b	1
		50Hz: 220V-230V D, 400V Y.	
41	51 007 03	Stator 21-18-2b	1
		50Hz: 500V D. 60Hz: 575V-600V D.	
41	51 007 04	Stator 21-18-2b	1
		60Hz: 440V-460V YSER, 220V-230V Y//.	
41	51 007 05	Stator 21-18-2b	1
		50Hz: 1000V Y, 550V D.	
41	51 007 06	Stator 21-18-2b	1
		60Hz: 220V-240V D.	
41	51 007 07	Stator 21-18-2b	1
		50Hz: 660V Y, 380V D. 60Hz: 440V D.	
41	51 007 08	Stator 21-18-2b	1
		60Hz: 200V-208V D.	
41	51 007 10	Stator 21-18-2b	1
		60Hz: 380V-400V D.	
41	51 007 11	Stator 21-18-2b	1
		60Hz: 230V D//, 380V Y//, 460V DSER.	
42	410 080	Spring washer 71.5X59X0.55	1
43	410 084	O-ring 71.2X3 FPM	1
44	410 100	Ball bearing 3306A- 2Z/C3VT113	1
45	51 029 03	Shaft unit	1
46	51 032 00	Bearing holder	1
47	51 041 00	Hexagon head screw	1
48	410 079	Supporting washer 40X50X2.5-SPRING STEEL	1
49	410 101	Ball bearing 3308A- 2Z/C3VT113	1
50	410 081	Retaining ring SGA 40	1
51	410 093	Retaining ring JB 90	1
52	410 022	O-ring 175X3 NBR	1
53	51 037 00	Spring ring, solid	1
54	410 091	O-ring 209.3X5.7 NBR	1
55	133 063	Inspection screw	4
56	133 064	O-ring 19.2X3 NBR	4
57	51 039 02	Adapter	1
58	50 037 34	O-ring 10.3X2.4 NBR	6
59	410 076	Hexagon flange screw M10X45-A4-80	6

Pos. No	Part. No	Denomination	Qty/Version
			180
60	50 037 31	O-ring 359.3X5.7 NBR	1
61	51 028 22	Mechanical seal	1
63	410 106	Pressure equalizer	2
64	410 085	O-ring 246.0X4.0 NBR	1
65	410 097	O-ring 84.4X4 FPM	1
66	410 096	O-ring 11.6X2.9 FPM	2
67	51 043 00	Seal housing cov.coa	1
68	50 021 18	Hex.socket hd screw M8X30-A4-70	2
69	133 060	Protective plug	2
70	51 035 02	Sleeve	1
71	51 036 00	Adjustment screw	1
72	51 013 50	Impeller	50Hz, H
72	51 013 52	Impeller	60Hz, H
72	51 014 50	Impeller	50Hz, N
72	51 014 52	Impeller	60Hz, N
73	132 424	Plain washer 12-A2-170	1
74	410 074	Hexagon head screw M12X80-A4-80	1
75	51 018 00	Diffuser coat.	H
75	51 019 00	Diffuser coat.	N
76	132 424	Plain washer 12-A2-170	4
77	410 075	Hexagon head screw M12X110-A2-70	4
78	132 314	O-ring 189.3X5.7 NBR	N
78	132 422	O-ring 219.3X5.7 NBR	H
79	51 040 00	Suction cover	H
79	51 042 00	Suction cover	N
80	132 424	Plain washer 12-A2-170	4
81	410 197	Hexagon head screw M12X35-A2-70	4
82	51 045 00	Damper complete	4
83	51 044 01	Strainer	1
84	410 011	Hexagon nut M12-A4-70	4
85	50 037 71	O-ring 160.0X4.0 NBR	1
86	410 757	Hex.socket hd screw M6X35-A2-70	2
87	133 125	O-ring 6.1X1.6 NBR	2
303	51 643 00	Terminal plate unit	1
317	50 993 47	CONTACTOR UNIT	50Hz: 220V – 240V D. Only for DOL, Softstarter.

Pos. No	Part. No	Denomination	Qty/Version
317.1	410 008	Hex.socket hd screw M4X16-A2-70	2
317.2	410 012	Lock nut	2
317.2	50 020 07	Lock nut M6-A4-70	2
317.3	50 020 04	Hex.socket hd screw M6X20-A4-70	2
317.4	50 020 04	Hex.socket hd screw M6X20-A4-70	2
317.5	410 749	Overload relay	1
317.6	410 762	Contactor	1
317.7	50 900 62	Single-core cable	1
317.7	51 076 00	Cable set	1
317.8	50 995 01	Holder	1
317.8	51 644 00	Holder	1
317.9	51 511 07	Motor protector SMART	1
317.910	51 625 00	Connection plate	1
319	50 993 47	CONTACTOR UNIT	1
319.1	410 008	Hex.socket hd screw M4X16-A2-70	2
319.2	410 012	Lock nut	2
319.2	50 020 07	Lock nut M6-A4-70	2
319.3	50 020 04	Hex.socket hd screw M6X20-A4-70	2
319.4	50 020 04	Hex.socket hd screw M6X20-A4-70	2
319.5	410 749	Overload relay	1
319.6	410 762	Contactor	1
319.7	50 900 62	Single-core cable	1
319.7	51 076 00	Cable set	1
319.8	50 995 01	Holder	1
319.8	51 644 00	Holder	1
319.9	51 511 07	Motor protector SMART	1
319.910	51 625 00	Connection plate	1
320	50 993 48	CONTACTOR UNIT	1
320.1	410 008	Hex.socket hd screw M4X16-A2-70	2
320.2	410 008	Hex.socket hd screw M4X16-A2-70	2
320.3	410 012	Lock nut	2
320.4	410 012	Lock nut	2
320.5	410 822	Overload relay	1
320.6	410 816	Contactor	1

Ordered separately.

50Hz: 220V - 230V D.

Ordered separately.

50Hz: 380V - 400V D.

Pos. No	Part. No	Denomination	Qty/Version
			180
320.7	50 900 62	Single-core cable	1
320.7	51 076 00	Cable set	1
320.8	50 995 00	Holder	1
320.9	51 511 05	Motor protector SMART	1
320.910	51 625 00	Connection plate	Ordered separately. 1
320.948	51 639 02	Cable set	Ordered separately. 2
321	50 993 48	CONTACTOR UNIT	50Hz: 415V - 440V D. 1
321.1	410 008	Hex.socket hd screw M4X16-A2-70	2
321.2	410 008	Hex.socket hd screw M4X16-A2-70	2
321.3	410 012	Lock nut	2
321.4	410 012	Lock nut	2
321.5	410 822	Overload relay	1
321.6	410 816	Contactactor	1
321.7	50 900 62	Single-core cable	1
321.7	51 076 00	Cable set	1
321.8	50 995 00	Holder	1
321.9	51 511 05	Motor protector SMART	1
321.910	51 625 00	Connection plate	Ordered separately. 1
321.948	51 639 02	Cable set	Ordered separately. 2
322	50 993 50	CONTACTOR UNIT	50Hz: 500V D. 1
322.1	410 008	Hex.socket hd screw M4X16-A2-70	2
322.2	410 008	Hex.socket hd screw M4X16-A2-70	2
322.3	410 012	Lock nut	2
322.4	410 012	Lock nut	2
322.5	410 466	Overload relay	1
322.6	410 756	Contactactor	1
322.7	50 900 62	Single-core cable	1
322.7	51 076 00	Cable set	1
322.8	50 995 00	Holder	1
322.9	51 511 05	Motor protector SMART	1
322.910	51 625 00	Connection plate	Ordered separately. 1
322.948	51 639 02	Cable set	Ordered separately. 2
325	50 999 02	CONTACTOR UNIT	50Hz: 380V – 400V Y/D. 1
325.1	410 008	Hex.socket hd screw M4X16-A2-70	8
325.2	410 012	Lock nut	8
325.3	410 146	Contactactor	3

Pos. No	Part. No	Denomination	Qty/Version
325.4	410 088	Holder	1
325.4	50 998 00	Holder	1
325.4	51 030 00	Rail	1
325.5	410 102	Overload relay	1
325.6	105 839	Cable tie	2
325.7	50 148 02	Time relay	1
325.8	50 509 00	Cable set	1
325.8	51 002 01	Cable set	1
325.9	51 511 05	Motor protector SMART	1
325.909	51 001 03	Connection plate	Ordered separately.
325.980	410 742	Flat pin sleeve 0,5-1,65MM2	Ordered separately.
330	50 999 03	CONTACTOR UNIT	60Hz: 460V Y/D.
330.1	410 008	Hex.socket hd screw M4X16-A2-70	8
330.2	410 012	Lock nut	8
330.3	410 088	Holder	1
330.3	50 998 00	Holder	1
330.3	51 030 00	Rail	1
330.4	410 102	Overload relay	1
330.5	105 839	Cable tie	2
330.6	50 148 02	Time relay	1
330.7	410 381	Contactor	3
330.8	50 509 00	Cable set	1
330.8	51 002 01	Cable set	1
330.9	51 511 06	Motor protector SMART	1
330.909	51 001 03	Connection plate	Ordered separately.
330.980	410 742	Flat pin sleeve 0,5-1,65MM2	Ordered separately.
334	50 993 51	CONTACTOR UNIT	60Hz: 230V - 240V D.
334.1	410 008	Hex.socket hd screw M4X16-A2-70	2
334.2	410 012	Lock nut	2
334.2	50 020 07	Lock nut M6-A4-70	2
334.3	50 020 04	Hex.socket hd screw M6X20-A4-70	2
334.4	50 020 04	Hex.socket hd screw M6X20-A4-70	2
334.5	410 750	Overload relay	1
334.6	410 762	Contactor	1
334.7	50 900 62	Single-core cable	1
334.7	51 076 00	Cable set	1
334.8	50 995 01	Holder	1

Pos. No	Part. No	Denomination	Qty/Version
			180
334.8	51 644 00	Holder	1
334.9	51 511 08	Motor protector SMART	1
334.910	51 625 00	Connection plate	Ordered separately. 1
334.948	51 639 02	Cable set	Ordered separately. 2
335	50 993 52	CONTACTOR UNIT	60Hz: 380V - 400V D. 1
335.1	410 008	Hex.socket hd screw M4X16-A2-70	2
335.2	410 008	Hex.socket hd screw M4X16-A2-70	2
335.3	410 012	Lock nut	2
335.4	410 012	Lock nut	2
335.5	410 823	Overload relay	1
335.6	410 816	Contactor	1
335.7	50 900 62	Single-core cable	1
335.7	51 076 00	Cable set	1
335.8	50 995 00	Holder	1
335.9	51 511 06	Motor protector SMART	1
335.910	51 625 00	Connection plate	Ordered separately. 1
335.948	51 639 02	Cable set	Ordered separately. 2
337	50 993 37	CONTACTOR UNIT	60Hz: 440V - 480V D. 1
337.1	410 008	Hex.socket hd screw M4X16-A2-70	4
337.2	410 012	Lock nut	4
337.4	410 822	Overload relay	1
337.5	410 816	Contactor	1
337.6	50 900 62	Single-core cable	1
337.7	50 995 00	Holder	1
337.8	51 076 00	Cable set	1
337.9	51 511 06	Motor protector SMART	1
337.910	51 625 00	Connection plate	Ordered separately. 1
337.948	51 639 02	Cable set	Ordered separately. 2
338	50 993 46	CONTACTOR UNIT	60Hz: 575V - 600V D. 1
338.1	410 008	Hex.socket hd screw M4X16-A2-70	2
338.2	410 008	Hex.socket hd screw M4X16-A2-70	2
338.3	410 012	Lock nut	2
338.4	410 012	Lock nut	2
338.5	410 466	Overload relay	1
338.6	410 756	Contactor	1
338.7	50 900 62	Single-core cable	1

Pos. No	Part. No	Denomination	Qty/Version 180
338.7	51 076 00	Cable set	1
338.8	50 995 00	Holder	1
338.9	51 511 06	Motor protector SMART	1
338.910	51 625 00	Connection plate	Ordered separately. 1
338.948	51 639 02	Cable set	Ordered separately. 1
340	50 993 52	CONTACTOR UNIT	60Hz: 380V - 400V D. Not CSA approved. 1
340.1	410 008	Hex.socket hd screw M4X16-A2-70	2
340.2	410 008	Hex.socket hd screw M4X16-A2-70	2
340.3	410 012	Lock nut	2
340.4	410 012	Lock nut	2
340.5	410 823	Overload relay	1
340.6	410 816	Contactor	1
340.7	50 900 62	Single-core cable	1
340.7	51 076 00	Cable set	1
340.8	50 995 00	Holder	1
340.9	51 511 06	Motor protector SMART	1
340.910	51 625 00	Connection plate	Ordered separately. 1
340.948	51 639 02	Cable set	Ordered separately. 2
341	50 993 37	CONTACTOR UNIT	60Hz: 440V - 480V YSER. 1
341.1	410 008	Hex.socket hd screw M4X16-A2-70	4
341.2	410 012	Lock nut	4
341.4	410 822	Overload relay	1
341.5	410 816	Contactor	1
341.6	50 900 62	Single-core cable	1
341.7	50 995 00	Holder	1
341.8	51 076 00	Cable set	1
341.9	51 511 06	Motor protector SMART	1
341.910	51 625 00	Connection plate	Ordered separately. 1
341.948	51 639 02	Cable set	Ordered separately. 2
341.960	410 033	Closed end splice 5.1-10.6;(AWG 18-8) L=38	Ordered separately. 3
363	51 318 03	Softstarter	1
363.10	51 356 00	Softstarter STARTER ONLY	1
505	50 777 00	Motor cable 4G2.5+2X1.5 MM2 OD=17-18	*
507	133 139	Motor cable 4G4 MM2 OD=16-17 MM	*

Pos. No	Part. No	Denomination	Qty/Version
508	410 129	Motor cable 4G4+2X1.5 MM2 OD=20-22 MM	* 180
509	410 130	Motor cable 7G4+2X1.5 MM2 OD=22-26 MM	*
510	131 028	Motor cable 4G6 MM2 OD=18-19MM	*
511	410 126	Motor cable 4G6+2X1.5 MM2 OD=23-25 MM	*
512	410 131	Motor cable 7G6+2X1.5 MM2 OD=24-28 MM	*
513	131 027	Motor cable 4G10 MM2 OD=23-25.5MM	*
514	410 127	Motor cable 4G10+2X1.5 MM2 OD=26-28MM	*
515	131 026	Motor cable 4G16 MM2 OD=26-28MM	*
516	410 128	Motor cable 4G16+2X1.5 MM2 OD=26-28MM	*
516.993	50 221 01	End sleeve 1.5 MM2; L=7 MM	Ordered separately. 2
526	410 132	Motor cable 10AWG/4 OD=18-19.7 MM	*
527	410 069	Motor cable 10AWG/3-2-1-GC OD=20-22MM	*
528	410 133	Motor cable 8AWG/4 OD=24-26MM	*
529	410 134	Motor cable 8AWG/3-2-1-GC OD=27-29 MM	*
531	410 136	Motor cable 4AWG/3-2-1-GC OD=33-35 MM	*
531.990	50 221 03	End sleeve 4MM2; L=10MM	Ordered separately. 3
531.991	50 221 07	End sleeve 25 MM2; L=15 MM	Ordered separately. 3
531.992	50 221 05	End sleeve 10 MM2; L=12 MM	Ordered separately. 1
540	410 060	Motor cable SCREEN 6X2.5MM2 OD=18-20	*
540.950	410 054	Shrink hose ID 6.4	Ordered separately. *
542	410 061	Motor cable SCREEN 3X2.5+3X2.5 19-20	*
542.950	410 054	Shrink hose ID 6.4	Ordered separately. *
542.961	410 034	Closed end splice 3-6(AWG 12-10) L=18	Ordered separately. 1
543	410 124	Motor cable SCREEN 3X6+3X6 OD=20-23MM	*
543.950	410 054	Shrink hose ID 6.4	Ordered separately. *
543.961	410 034	Closed end splice 3-6(AWG 12-10) L=18	Ordered separately. 1

Pos. No	Part. No	Denomination	Qty/Version
544	410 125	Motor cable SCREEN 3X10+3X10 OD=23-26	* 180
544.951	410 122	Shrink hose ID 9.5	Ordered separately. *
544.961	410 034	Closed end splice 3-6(AWG 12-10) L=18	Ordered separately. 1
641	50 919 00	Discharge connection DN 100 HOSE 4"	1
643	50 919 01	Discharge connection ISO G4" OUTER	1
643.970	410 029	Coupling part DN 100 G4" INNER STORZ	Ordered separately. 1
646	50 919 03	Discharge connection VICTUALIC 4"	1
648	50 919 02	Discharge connection DN 100 NPT 4-8 OUTER	1
661	51 038 05	Discharge connection DN 150 HOSE 6"	1
663	51 038 06	Discharge connection ISO G6" OUTER	1
663.972	410 099	Coupling part DN 150 G6" INNER STORZ	Ordered separately. 1
666	51 038 09	Discharge connection VICTUALIC 6"	1
668	51 038 08	Discharge connection DN 150 NPT 6-8 OUTER	1
800	51 069 00	O-ring kits	Contains all position numbered O-rings. 1
801	51 081 00	Zinc anode set	1
900	51 075 00	Basic repair kit	1
900.1	410 100	Ball bearing 3306A- 2Z/C3VT113	1
900.2	410 101	Ball bearing 3308A- 2Z/C3VT113	1
900.3	410 106	Pressure equalizer	2
900.4	51 028 22	Mechanical seal	1
900.5	51 069 00	O-ring kits	Contains all position numbered O-rings. 1
901	132 195	Plug contact 380-415V 3-PH 63A CEE 5P	1
901	410 685	Plug contact 380-415V 3-PH 32A CEE 4P	1
901	50 102 02	Phase shifter 220-575V 0-48A	1
902	51 125 02	Adapter unit	H 1
902	51 125 03	Adapter unit WITH EXTENDER	N 1

* Quantity per meter



Grindex AB • Box 7025 • SE-174 07 Sundbyberg • Sweden • Tel +46 8 606 66 00 • Fax +46 8 745 53 28 • marketing@grindex.com

© Grindex AB. The original instruction is in English. All non-English instructions are translations of the original instruction.